

# ThinkCentre Neo 50s Gen 5

Transform your workspace with our sleek 8.2L small form factor (SFF) desktop, designed for professionals who require both power and creativity in a compact package. Creative professionals will appreciate the Discrete Intel® Arc™ A310 graphics, which deliver stunning visuals, making it the perfect tool for designers, video editors, and digital creators. Paired with up to 14th Gen Intel® Core™ i7 processor, it efficiently blends performance and efficiency, ensuring that every business task is handled with precision and speed. Redesigned with precision, its sleek chassis exudes a modern, sophisticated aesthetic that elevates any professional workspace.



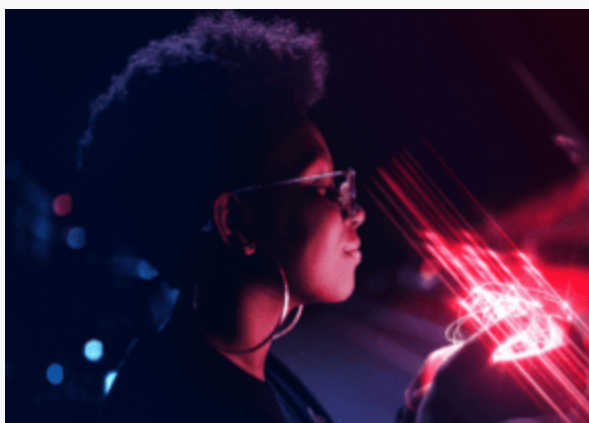
## Rugged compact performance primed for business

ThinkCentre Neo series offers organizations enhanced manageability and security features, along with additional configuration and expansion options.

Complemented by the latest Intelligent Cooling Engine (ICE) 7.0, it meticulously maintains your desktop's optimal performance even under heavy workloads. This ensures that your productivity never takes a hit due to overheating, allowing you to focus on what matters most - your work. Coupled with up to 64GB of DDR5 memory, it enables you to multitask effortlessly and switch between applications without a hitch.

Stay connected and in control with a versatile array of ports designed to meet all your needs. The USB-C port offers high speed for fast data transfer, while HDMI 2.1 and DisplayPort 1.4 deliver crystal-clear video output. Coupled with Ethernet for reliable internet connectivity and a VGA port for flexible display options, this desktop is well-suited for those who require consistent, high-performance connectivity.

This desktop delivers an ideal balance between cost and performance, offering advanced features for modern professionals. It is designed to provide exceptional value without compromising on professional-grade capabilities.



# Small in Size, Big in Functionality

Experience the perfect fusion of style, power, and functionality with the latest ThinkCentre Neo 50s Gen 5 desktop. Designed for versatility, it supports a multi-screen setup and is equipped with the latest processors and advanced graphics that effortlessly handle demanding tasks. Whether you are multitasking, working on creative projects, or conducting data analysis, this desktop is the ultimate choice for those who value both aesthetics and high performance in a compact design.

## Secured Inside and Out

Your data deserves the best protection, and this desktop delivers. Featuring BIOS-based smart USB protection and dTPM 2.0, it offers a robust defense against unauthorized access. For those who require an extra layer of security, optional features like the intrusion switch and cable lock offer additional protection.

## Enjoy Multidevice Collaboration

Optimizing your workflow, the Smart Connect app enhances cross-device integration, allowing you to easily connect mobile devices, essential peripherals, and access cloud services. With a variety of ports and advanced connectivity options, this desktop ensures smooth and efficient integration across all your devices.

## Power and Precision

Pre-installed with Windows 11 Pro, this desktop is designed to meet the demands of the modern business environment. Lenovo recommends Windows 11 Pro for its enhanced security features, user-friendly interface, and optimized performance, ensuring that you have the perfect foundation for productivity and success.

## Choose Sustainability at Every Step

Lenovo is helping to reduce its environmental impact by making the industry's broadest tech solutions portfolio more sustainable. Partner with us to implement sustainable, cost-efficient practices spanning the device lifecycle and make a meaningful difference in how you use technology.



### Recycled or Sustainable Product Materials:

Lenovo is innovating to increase energy efficiency and use of recycled content in our devices. The use of Post Consumer Content (PCC) recycled plastic not only meets high-performance standards but also reflects our dedication to environmental responsibility and a more sustainable future.

- 85% post-consumer content (PCC) recycled acrylonitrile butadiene styrene (ABS) plastics.



### Recycled Shipping/Packaging Content:

Lenovo is focused on integrating sustainable materials and reducing waste through innovative packaging design. And we are steadily increasing our use of materials like FSC certified carton, and ocean-bound plastic. Embracing eco-friendly practices, we present packaging for ThinkCentre neo Gen5 that aligns with our green initiatives. Say goodbye to traditional plastic and embrace a greener tomorrow with us.

- 30% ocean-bound plastic (OBP) used in the device bag.
- Forest Stewardship Council (FSC) certified carton.



### Product PCC

- 85% post-consumer content (PCC) recycled acrylonitrile butadiene styrene (ABS) plastics.

### Asset Recovery Services:

Disposal of devices and peripherals is an environmental concern that, if not done right, can also become a security challenge. Lenovo Asset Recovery Services (ARS) helps keep resources circulating by reusing parts wherever possible, refurbishing devices, and recycling assets, helping customers with lowering their environmental impact.

### Co2 Offset Services:

Lenovo Co2 Offset Services estimates CO2 emissions across the average lifecycle of your device, from manufacture to daily use to end of life, and gives you the option to offset them by supporting verified climate action projects. We offset the carbon emissions associated with our devices by providing the option at point of purchase.



## Lenovo Services

Lenovo delivers tailored sustainability services, devices, and infrastructure solutions from our broad portfolio, working closely with you to support your target outcomes across the IT lifecycle..



### On-site Service

- On-site support if needed
- Normally next business day service
- Agreed appointment times

## Accessories

### Lenovo Performance FHD Webcam

- It has 1/2.9-inch RGB sensor, 95° lens, and 4x digital zoom. In addition, dual microphones can pick-up your voice from up to 2 meters away.
- Features a range of mounting options, from top-of-monitor to tripod, with wide-angle pan/tilt controls.
- Comes with facial recognition technology and Windows Hello 4.1.



PN: 4XC1D66055

### Lenovo Essential Wireless Combo Keyboard & Mouse Gen 2

- Embrace the freedom of a clutter-free and cable-free work setup.
- Ergonomically sculpted cups and low-profile island keys for maximum comfort.
- A 2.4 MHz receiver for a seamless keyboard and mouse connection.



PN: 4X31N50708 – 4X31N50757

# ThinkCentre Neo 50s Gen 5

## Performance

**Processor**  
13th/14th Generation Intel Core i3/i5/i7 Processor, or Intel 300 Processor

**Operating System**  
Windows 11 Pro  
Windows 11 Home  
Windows 11 Home Single Language  
Windows 11 DG Windows 10 Pro 64  
Ubuntu Linux

**Graphics**  
Intel UHD graphics 710 (Integrated)  
Intel UHD graphics 730 (Integrated)  
Intel UHD graphics 770 (Integrated)  
Intel Arc A310 LP

**Chipset**  
Intel B760 chipset

**Memory <sup>1</sup>**  
Up to 64GB DDR5-5600, two UDIMM slots, dual-channel

<sup>1</sup>The max memory is based on the test results with current Lenovo memory offerings.

**Storage <sup>2 3</sup>**  
Up to two drives, 1x 3.5" HDD + 1x M.2 SSD  
3.5" HDD up to 2TB  
M.2 SSD up to 1TB

<sup>2</sup>The max capacity of each disk type is based on the test results with current Lenovo storage offerings.

<sup>3</sup>For installing HDD storage, 3.5" HDD screw and grommet kit is needed.

**Optical\* <sup>4</sup>**  
DVD-ROM or DVD±RW\*

<sup>4</sup>For installing ODD, slim ODD bracket kit is needed

**Audio**  
High Definition (HD) Audio  
Single speaker, 1W x1\*

**Power Supply\***  
260W 90%,180W 85% PSU

## Design

**Form factor**  
SFF (8.2L)

**Dimensions <sup>5</sup>**  
92.5 x 291.4 x 339.5 mm (3.6 x 11.5 x 13.4 inches)  
  
<sup>5</sup>The system dimensions may vary depending on configurations.

**Weight <sup>6</sup>**  
Around 4.2 kg (9.3 lbs)  
  
<sup>6</sup>The system weight is approximate and may vary depending on configurations

**Color**  
Black (chassis), grey (bezel)

**Bays <sup>7</sup>**  
1x 3.5" disk bay  
1x slim ODD bay

<sup>7</sup>For installing HDD or ODD, 3.5" HDD screw and grommet kit or slim ODD bracket kit is needed.

**Expansion Slots**  
One PCIe 3.0 x1  
One PCIe 3.0 x16  
Two M.2 slots (one for WLAN, one for SSD)

## Connectivity

**Ethernet**  
Gigabit onboard Ethernet

**WLAN + Bluetooth\* <sup>8</sup>**  
802.11ax (Wi-Fi 6 / Wi-Fi 6E), Bluetooth 5.3  
up to Intel Wi-Fi 6E AX211, 802.11ax, Bluetooth 5.3

<sup>8</sup>Wi-Fi 6E is only enabled on Windows 11 and operates as Wi-Fi 6 with Windows 10.

**Front ports**  
1x USB-C (USB 5Gbps / USB 3.2 Gen 1), with 15W charging  
2x USB-A (USB 5Gbps / USB 3.2 Gen 1)  
1x headphone / microphone combo jack (3.5mm)  
1x microphone (3.5mm)

**Rear ports**  
4x USB-A (Hi-Speed USB / USB 2.0)  
1x HDMI 2.1 TMDS  
1x DisplayPort 1.4  
1x VGA  
1x Ethernet (RJ-45)  
1x line-out (3.5mm)  
1x parallel\*  
1x USB-A (Hi-Speed USB / USB 2.0)\*  
1x serial\*  
1x 2nd serial\*

## Security & Privacy

**Security**  
Discrete TPM 2.0  
Coded Lock\*  
Chassis Intrusion Switch\*  
Smart Cable Clip\*  
Kensington Security Slot, 3 x 7 mm

## Lenovo services

**Base Warranty**  
Up to 1-year limited onsite service

## Certifications

**Green Certifications <sup>10 11</sup>**  
ENERGY STAR 8.0\*  
EPEAT Silver Registered\*  
EPEAT Gold Registered\*  
TCO Certified 9.0

<sup>10</sup>The items listed under the "Green Certifications" section may not only refer to certification but also registration or self-declaration.

<sup>11</sup>EPEAT is registered where applicable, please see [epeat.net](https://epeat.net) for registration status by country.