

WorkForce WF-7830DTWF



DATASHEET / BROCHURE



Perfect for demanding home office or small office settings, the WF-7830DTWF is an affordable, high-quality printer with double-sided printing, scanning and fax all up to A3 and a 50-page ADF.

Think big with this high-quality multifunction with single and double-sided printing, scanning and fax all up to A3. You'll stride through tasks with print speeds of up to 25ppm* in black and a 50 page A3 automatic document feeder (ADF). And that's not forgetting its cost-effective inks and flexible wireless connectivity solutions such as Scan-to-cloud*.

Professional A3 printing

This A3 multifunction printer will meet the needs of even the most demanding home office and small office users. It offers double-sided (duplex) printing, scanning and faxing all up to A3, plus its automatic document feeder can process up to 50 double-sided A3 pages. Furthermore, its PrecisionCore printhead produces high-quality, laser-like prints.

Enhance your productivity

This efficient, reliable and fast model offers A3 double-sided printing and print speeds of 25ppm in black and 12ppm in colour*. It's also simple to operate directly thanks to its intuitive user interface and 6.9cm touchscreen.

Minimise your outgoings

Dramatically reduce your costs; this printer is compatible with individual inks which are 50% more efficient compared to tri-colour cartridges*. Giving great value for money, cartridges are available in standard, XL and XXL, with the highest yield delivering up to 1,100 pages*.

Flexible wireless solutions

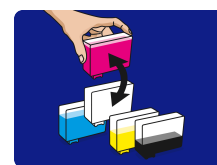
Print from anywhere in the office with Wi-Fi connectivity or use Wi-Fi Direct to print from compatible wireless devices without a Wi-Fi network. Epson's free mobile printing apps and solutions provide further versatility; Email Print allows you to send items to print from almost anywhere in the world*. And with Scan-to-Cloud, you can enjoy the benefits of collaborative working*.

3 months free ReadyPrint Flex ink subscription*

For new customers, you can get the first 3 months free when you sign up with code EPSON3. Subscribe and save up to 70% on ink costs* with ReadyPrint Flex, and never run out of ink again. Your ink levels are monitored and new inks are sent direct to your door, before you run out!

KEY FEATURES

- **A3 multifunction printer for business quality documents**
High quality double-sided print, scan and fax in one machine, plus 50-page ADF
- **Wireless connectivity lets you print from anywhere**
Print and scan easily from your smartphone or tablet using the Epson iPrint app, for high-quality document printing*
- **Save money by only replacing the colour used**
With Epson's genuine individual inks
- **Money and paper saving double-sided printing**
Automatically print on both sides to reduce paper usage and save money
- **Enjoy hassle-free ink replacements, delivered to your door, before you run out!**
First 3 months free ReadyPrint Flex ink subscription* with code EPSON3



PRODUCT SPECIFICATIONS

TECHNOLOGY

Printing Method	PrecisionCore™ Print Head
Minimum Droplet Size	3,8 pl, With Variable-Sized Droplet Technology
Ink Technology	DURABrite™ Ultra

PRINT

Printing Speed ISO/IEC 24734	25 pages/min Monochrome, 12 pages/min Colour
Duplex Printing Speed	16 A4 Pages/min Monochrome, 9 A4 Pages/min Colour
ISO/IEC 24734	
Maximum Printing Speed	32 pages/min Monochrome (plain paper 75 g/m ²), 22 pages/min Colour (plain paper 75 g/m ²)
Printing Resolution	4.800 x 2.400 DPI
Printing Volume	50.000 pages per month The maximum number of printed pages per month based on the performance capabilities of the printer, including ISO rated print speeds and paper handling capabilities.
Recommended Duty Cycle	200 - 2.500 pages per month
Colours	Black [Pigment], Cyan [Pigment], Yellow [Pigment], Magenta [Pigment]

For detailed information on printing speeds please visit <http://www.epson.eu/testing>.

SCAN

Optical Resolution	1.200 DPI x 2.400 DPI (Horizontal x Vertical)
Output formats	BMP, JPEG, TIFF, multi-TIFF, PDF, searchable PDF, PNG
Scanner type	Contact image sensor (CIS)

FAX

Fax speed dials (max)	100 names and numbers
Page memory	Up to 180 pages (ITU-T No.1 chart)
Fax Functions	PC Fax, Memory Reception, Auto Redial, Speed Dial, Broadcast Fax, Polling Reception

PAPER / MEDIA HANDLING

Paper Formats	A3 (29.7x42.0 cm), A4 (21.0x29.7 cm), A5 (14.8x21.0 cm), A6 (10.5x14.8 cm), B4, B5, C4 (Envelope), C6 (Envelope), DL (Envelope), No. 10 (Envelope), Letter, 9 x 13 cm, 10 x 15 cm, 13 x 18 cm, 16:9, User defined, Legal
Automatic Document Feed	50 pages
Duplex	Yes (A4/A3, plain paper)
Paper Tray Capacity	500 Sheets Maximum
Number of paper trays	2

CONNECTIVITY

Interfaces	Hi-Speed USB - compatible with USB 2.0 specification, Ethernet interface (100 Base-TX / 10 Base-T), Wireless LAN IEEE 802.11b/g/n, Wi-Fi Direct
WLAN Security	WEP 64 Bit, WEP 128 Bit, WPA PSK (TKIP), WPA PSK (AES)

GENERAL

Energy Use	20 Watt (standalone copying, ISO/IEC 24712 pattern), 0,8 Watt (sleep mode), 8,8 Watt (Ready), 0,2 Watt (Power off), TEC 0,12 kWh/week
Product dimensions	515 x 400 x 350 mm (Width x Depth x Height)

OTHER

Warranty	12 months On-site service Optional warranty extension available
----------	--

PRODUCT SPECIFICATIONS

TECHNOLOGY

Printing Method	PrecisionCore™ Print Head
Minimum Droplet Size	3,8 pl, With Variable-Sized Droplet Technology
Ink Technology	DURABrite™ Ultra

PRINT

Printing Speed ISO/IEC 24734	25 pages/min Monochrome, 12 pages/min Colour
Duplex Printing Speed	16 A4 Pages/min Monochrome, 9 A4 Pages/min Colour
ISO/IEC 24734	
Maximum Printing Speed	32 pages/min Monochrome (plain paper 75 g/m ²), 22 pages/min Colour (plain paper 75 g/m ²)
Printing Resolution	4.800 x 2.400 DPI
Printing Volume	50.000 pages per month The maximum number of printed pages per month based on the performance capabilities of the printer, including ISO rated print speeds and paper handling capabilities.
Recommended Duty Cycle	200 - 2.500 pages per month
Colours	Black [Pigment], Cyan [Pigment], Yellow [Pigment], Magenta [Pigment]

For detailed information on printing speeds please visit <http://www.epson.eu/testing>.

SCAN

Optical Resolution	1.200 DPI x 2.400 DPI (Horizontal x Vertical)
Output formats	BMP, JPEG, TIFF, multi-TIFF, PDF, searchable PDF, PNG
Scanner type	Contact image sensor (CIS)

FAX

Fax speed dials (max)	100 names and numbers
Page memory	Up to 180 pages (ITU-T No.1 chart)
Fax Functions	PC Fax, Memory Reception, Auto Redial, Speed Dial, Broadcast Fax, Polling Reception

PAPER / MEDIA HANDLING

Paper Formats	A3 (29.7x42.0 cm), A4 (21.0x29.7 cm), A5 (14.8x21.0 cm), A6 (10.5x14.8 cm), B4, B5, C4 (Envelope), C6 (Envelope), DL (Envelope), No. 10 (Envelope), Letter, 9 x 13 cm, 10 x 15 cm, 13 x 18 cm, 16:9, User defined, Legal
Automatic Document Feed	50 pages
Duplex	Yes (A4/A3, plain paper)
Paper Tray Capacity	500 Sheets Maximum
Number of paper trays	2

CONNECTIVITY

Interfaces	Hi-Speed USB - compatible with USB 2.0 specification, Ethernet interface (100 Base-TX / 10 Base-T), Wireless LAN IEEE 802.11b/g/n, Wi-Fi Direct
WLAN Security	WEP 64 Bit, WEP 128 Bit, WPA PSK (TKIP), WPA PSK (AES)

GENERAL

Energy Use	20 Watt (standalone copying, ISO/IEC 24712 pattern), 0,8 Watt (sleep mode), 8,8 Watt (Ready), 0,2 Watt (Power off), TEC 0,12 kWh/week
Product dimensions	515 x 400 x 350 mm (Width x Depth x Height)

OTHER

Warranty	12 months On-site service Optional warranty extension available
----------	--

LOGISTICS INFORMATION

SKU	C11CH68403
EAN code	8715946668420
Country of Origin	Indonesia
Layer	2 Units

WorkForce WF-7830DTWF

WHAT'S IN THE BOX

- Individual Ink Cartridges
- Main unit
- Power cable
- Quick Start Guide
- Warranty document
- Driver and utilities

INK CARTRIDGE COMPATIBILITY



INK YIELD DATA

	Suitcase 405	Suitcase 405XL	Suitcase 405XXL
●	350 pages*	1.100 pages*	2.200 pages*
● ● ●	300 pages*	1.100 pages*	

* Approx. page yield based on ISO/IEC 24711/24712 or ISO/IEC 29102/29103. Actual yield will vary depending on images printed and usage conditions. For more information visit <http://www.epson.eu/pageyield>

Epson Deutschland GmbH
Schießstraße 49
D-40549 Düsseldorf
Info-Line: 02159 92 79 500
Telefax: +49 (0) 211 54229-001
www.epson.de

Epson in Österreich
Info-Line: 01 253 49 78 333
www.epson.at
Epson in der Schweiz
Info-Line: 022 592 7923
www.epson.ch

Alle Marken und eingetragenen Warenzeichen sind das Eigentum der Seiko Epson Corporation oder der jeweiligen Rechteinhaber.
Diese Produktinformationen können ohne vorherige Ankündigung geändert werden.

1. [see epson.co.uk/cartridgefootnotes](http://see.epson.co.uk/cartridgefootnotes)

EPSON[®]