



 DATASHEET

Desktop Direct Thermal Printer Series

Print Performance,
Meet Affordability

Product SKUs

TD-4210D

TD-4410D

TD-4420DN

TD-4520DN

TD-4420DNFC

TD-4550DNWB

TD-4550DNWBFC



TD 4 DESKTOP THERMAL PRINTER SERIES

Print performance, meet affordability.

With 4-inch Desktop Direct Thermal Printers from Brother, you have the capabilities you need to move inventory faster, track it better, and minimize the cost of doing it all.

These precision-built barcode label printers deliver the right levels of performance, quality, and integration at an exceptional value. From inventory and shipping to barcode and shelf labeling – now you can easily and affordably produce the labels you need, with the reliability and support that only Brother delivers.

Expect a complete set of connectivity, fast printing, high resolution and linerless printing options, along with superior software compatibility. It's powerful desktop printing that doesn't come at a price.



	User Interface	WiFi®/ Bluetooth®	Airprint®/ MFi	USB	Ethernet	Resolution	Speed ¹	Realtime Clock	Linerless
TD-4210D	3 keys / 3 LEDs			✓		203dpi	5ips		
TD-4410D	3 keys / 3 LEDs			✓		203dpi	8ips		
TD-4420DN	3 keys / 3 LEDs			✓	✓	203dpi	8ips		
TD-4420DNFC	3 keys / 3 LEDs			✓	✓	203dpi	8ips		✓
TD-4520DN	3 keys / 3 LEDs			✓	✓	300dpi	6ips		
TD-4550DNWB	7 keys / LCD	✓	✓	✓	✓	300dpi	6ips	✓	
TD-4550DNWBFC	7 keys / LCD	✓	✓	✓	✓	300dpi	6ips	✓	✓

Key features



Simplicity: Create professional labels with the included P-touch Editor label design software—no expertise required.



Affordability: Help cut costs upfront and improve ROI with the most affordable desktop direct thermal print solutions available.



Quality: 203dpi and 300dpi models print clean, crisp barcodes, fonts, logos, and more.



Versatility: Compatible with a wide range of label and receipt media, including linerless labels, to print the application you need.



Compatibility: Integrate with WMS systems, manufacturing platforms, and other software solutions.



Reliability: Backed by an industry-leading Two-year Premier Limited Warranty, which even includes the printhead.²



Performance: Help boost productivity with print speeds up to 8 inches per second.¹

Learn more about the TD 4 Desktop Thermal Printer Series



Industry applications

Easy to operate and maintain, Brother four-inch desktop direct thermal printers produce high-quality shipping and barcode labels.



Warehouse

- Barcodes
- Item marking
- License plates

Transportation & logistics

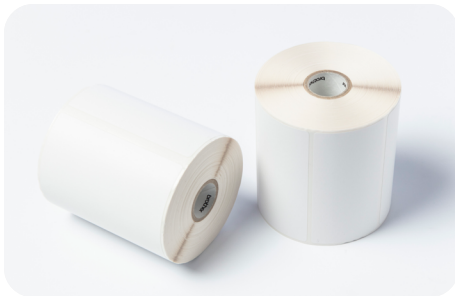
- Shipping labels
- Product ID labels
- Pallet labels
- Parcel and post labels

Manufacturing

- Parts / product labels
- Storage labels

Retail

- Product labels
- Inventory labels
- Barcodes
- Grab and Go
- Ingredient
- Food Prep
- Custom Order



Supplies

Find thermal paper, lined and linerless labels certified by Brother to provide the best image quality for all your applications.³ Custom sizes and preprint options are also available.



Accessories

We offer accessories to meet current and future configuration needs, such as an optional peeler or cutter and replacement platen roller and printhead.³



Extended warranty service

Extend the useful life of your printer by adding an extended service program³ at any point while your printer is still under warranty.

Get in contact

800-543-6144
MobileSales@Brother.com
BrotherMobileSolutions.com

Software tools for easy integration and label design



Potouch Editor



BarTender



Loftware Cloud



TEKLYNX CODESOFT



CYBRA

	TD-4210D	TD-4410D	TD-4420DN / TD-4420DNFC	TD-4520DN	TD-4550DN / TD-4550DNFC
--	----------	----------	-------------------------	-----------	-------------------------

General

Box Contents	Printer, AC Adapter, Power Cord, USB Cable, Documents				
Dimensions (W x H x L)	7.1in (180mm) x 6.1in (155mm) x 8.8in (224mm)				
Power Specifications	External AC Adapter (Input: 100 - 240VAC 50/60Hz 2.0A, Output: 24VDC 5A)				
Printer Memory	64MB Flash, 256MB SDRAM				
Control Panel	3 Keys / 3 LEDs		3 Keys / 3 LEDs		7 Keys / 3 LEDs, LCD
Real Time Clock	None		None		Standard (Coin Cell Battery Optional)
Label Designer	P-Touch Editor to design labels and connect to databases				
Operating Systems	Windows® 11/10/8.1	Windows 11/10/8.1/7	Windows Server 2022/2019/2016/2012R2/2012/2008R2/2008, Windows 11/8.1/8/7, Linux, and SAP Device		
SDK Support	Windows b-PAC	Windows b-PAC, Android™ 4.0.3 or Higher	Windows b-PAC, Android 4.0.3 or Higher, iOS® 11 or Higher		
Device Management			BRAdmin Professional 4		
Printer Languages	ZPL II, EPL, DPL, CPCL, Raster Graphics, Text (Template), ESC/P				AirPrint®
			ZPL II, EPL, DPL, CPCL, Raster Graphics, Text (Template), ESC/P		
Temperature/Humidity	Operating: 32°F - 104°F (0°C - 40°C) / 20% - 85% Storage: -4°F - 140°F (-20°C - 60°C) / 5% - 90%				
Label Peeler	Optional		TD-4420DN: Optional TD-4420DNFC: N/A	Optional	TD-4550DN: Optional TD-4550DNFC: N/A
Automatic Cutter	Optional		TD-4420DN: Optional TD-4420DNFC: Installed	Optional	TD-4550DN: Optional TD-4550DNFC: Installed

Connectivity

Standard Interfaces	USB 2.0, RS232C Serial	Ethernet LAN (10/100Base-TX), USB 2.0, RS232C Serial	Ethernet LAN (10/100Base-TX), USB 2.0, Host USB, RS232C Serial	
				Wi-Fi® WLAN (5GHz 802.11a/n and 2.4GHz 802.11b/g/n Infrastructure, 802.11g/n Wireless Direct), Bluetooth Version 4.2 BLE/MFi
Security Protocols	None	LAN: 802.1x (EAP-FAST, PEAP, EAP-TLS, EAP-TTLS, EAP-MD5)	LAN: 802.1x (EAP-FAST, PEAP, EAP-TLS, EAP-TTLS, EAP-MD5)	
				WLAN: 802.1x (EAP-FAST, PEAP, EAP-TLS, EAP-TTLS)
Wireless Security	None		Infrastructure: WEP 64/128bit, WPA/WPA2-PSK (TKIP/AES) Wireless Direct: WPA2-PSK (AES)	
Bluetooth Profiles	None		Serial Port (SPP), Object Push (OPP), Hardcopy Replacement (HCRP), Generic Attribute (GATT) Low Energy	

TD-4210D	TD-4410D	TD-4420DN / TD-4420DNFC	TD-4520DN	TD-4550DN / TD-45500DNFC
----------	----------	----------------------------	-----------	-----------------------------

Printing

Print Technology	Direct Thermal Desktop Printer			
Print Head Resolution	203dpi x 203dpi (8 dots/mm) max		300dpi x 300dpi (12 dots/min) max	
Print Speed¹	Up to 5ips max (127.0 mm/sec)	Up to 8ips max (203.2mm/sec)	Up to 8ips max (203.2mm/sec)	Up to 6ips max (152.4mm/sec)
Media/Print Width	4.7in (118 mm) / 4.3in (108.4mm)			
Resident Barcodes	Linear: Code39, Code93, Code128, ITF, UPC-A/E, EAN8/13, GS1-128 (UCC/EAN-128), GS1 DataBar (RSS), MSI/Plessey, Industrial 2/5, Codabar (NW-7), POSTNET 2D: PDF417/MicroPDF417, Data Matrix, Maxicode, QR Code/Micro QR Code, Aztec			
Printer Sensors	Top Cover, Transmissive (Gap), Full Width Moveable Reflective (Black Mark), Peeler (Option)			
Media Type	Roll or Fanfold, Die-cut or Continuous Label, Receipt, Tag and Wristband			
Linerless Media Type	None	TD-4420DN: None TD-4420DNFC: Repositionable acrylic linerless labels	None	TD-4550DN: None TD-4550DNFC: Repositionable acrylic linerless labels
Media Roll Size	Up to 5in (127mm) Outer Diameter Core size from 0.5in to 1.5in Inside Diameter			
Media Loading	Drop-In Spindle-Less Design Rear Feed (External Roll or Fanfold)			
Media Specifications	Width: 0.8in - 4.7in (19mm - 118mm) Thickness: 2mil - 11mil (0.06mm - 0.28mm) Length: 0.3in - 118.1in (6.4mm - 3000.0mm)			
Warranty²	2-Year Premier Limited Warranty (includes printhead)			

¹ Based on performance tests using Brother certified media, actual results may vary in actual applications.

² Warranty includes the printhead, which is covered up to 2 years or 1 million linear inches, whichever comes first. For full details, contact your Brother sales representative or visit our [Warranty Page](#).

³ Additional purchase required.

Images are for illustrative purposes only. Actual output (such as font and margins) may vary. All specifications subject to change without notice.

All trademarks and registered trademarks referenced herein are the property of their respective companies.