

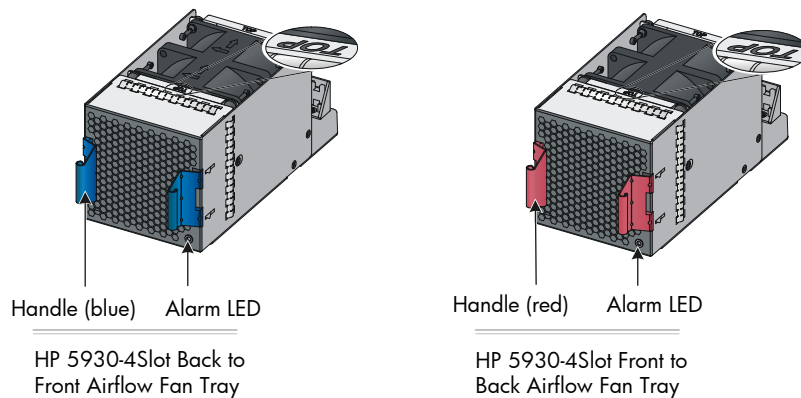


Product code	HP description	Alias
JH185A	HP 5930-4Slot Back (Power Side) to Front (Port Side) Airflow Fan Tray	HP 5930-4Slot Back to Front Airflow Fan Tray
JH186A	HP 5930-4Slot Front (Port Side) to Back (Power Side) Airflow Fan Tray	HP 5930-4Slot Front to Back Airflow Fan Tray

## Overview

The HP 5930-4Slot Back to Front Airflow Fan Tray provides forward airflow from the power module side to the port side. The HP 5930-4Slot Front to Back Airflow Fan Tray provides reverse airflow from the port side to the power module side. The two fan trays feature small size, fast heat dissipation, and hot swapping. They can adjust the fan speed automatically.

## Views



⚠ When you install a fan tray, make sure the "TOP" sign is on the top surface of the fan tray.

## Specifications for the fan trays

Item	Specification
Fans	1, 80 × 80 × 76 mm (3.15 × 3.15 × 2.99 in)
Airflow direction	HP 5930-4Slot Back to Front Airflow Fan Tray: From the power module side to the port side  HP 5930-4Slot Front to Back Airflow Fan Tray: From the port side to the power module side
Max fan speed	20000 R.P.M
Max airflow	120 CFM
Max power consumption	57 W
Voltage	12 V
Operating temperature	0°C to 45°C (32°F to 113°F)
Operating humidity	5% to 95% (non condensing)
Storage temperature	-40°C to +70°C (-40°F to +158°F)
Storage humidity	5% to 95% (non condensing)

## Alarm LED for the fan trays

Status	Description
On	A problem has occurred on the fan tray.
Off	The fan tray is operating correctly.

## Installing or removing a fan tray

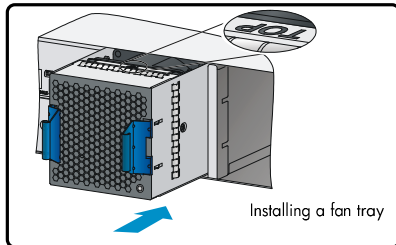
The installation and removal procedures are the same for the HP 5930-4Slot Back to Front Airflow Fan Tray and the HP 5930-4Slot Front to Back Airflow Fan Tray.

## Safety precautions

- ⚠ Before you install or remove a fan tray, wear an ESD wrist strap and make sure the wrist strap makes good skin contact and is reliably grounded.
- Do not touch any naked wire or terminal.
- Do not place the fan tray in a damp environment and prevent liquid from flowing into the fan tray.
- When an internal circuit or component is faulty, do not remove any components from the fan tray yourself. Contact HP Support.

## Installing a fan tray

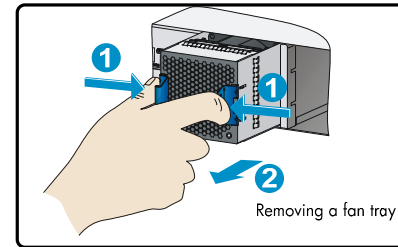
- ⚠ Before you install a fan tray, make sure the fan tray model is compatible with the device and the airflow direction is as required by the installation site.
- To avoid damaging the fan tray and the backplane connector, insert the fan tray slowly. If you encounter a resistance or the fan tray tilts while inserting the fan tray, pull out the fan tray and reinsert it.



Orient the fan tray with the "TOP" sign on the top surface of the fan tray. Holding the fan tray handles with one hand and supporting the fan tray bottom with the other, insert the fan tray slowly into the slot along the guide rails until the fan tray has good contact with the backplane.

## Removing a fan tray

- ⚠ Ensure electrical safety when you remove a fan tray on an operating device.
- Never touch a rotating fan on an operating device.
- To prevent a fan from being imbalanced and causing loud noise, do not touch the fan blades and rotation axis, even if the fan is not rotating.
- Place the removed fan tray in an anti-static mat or bag.



- ① Hold the fan tray handles with one hand and pull the fan tray part way out of the slot.
- ② Support the fan tray bottom with the other hand and pull the fan tray completely out of the slot along the guide rails.

## Documentation

To find related documents, browse to the Manuals page of the HP Business Support Center website:

<http://www.hp.com/support/manuals>

