

# LogiLink®

## Tilt TV Wall Mount for 37"- 70" TV

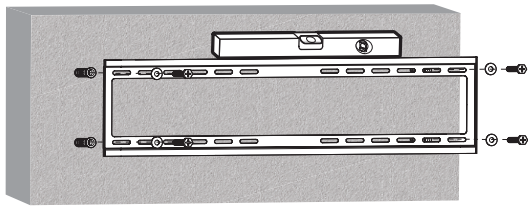
Art. No.: BP0039



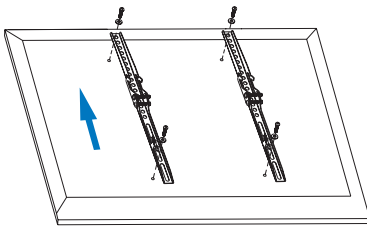
Easy installation and compatible with VESA standard max. 600 x 400mm.

### Features:

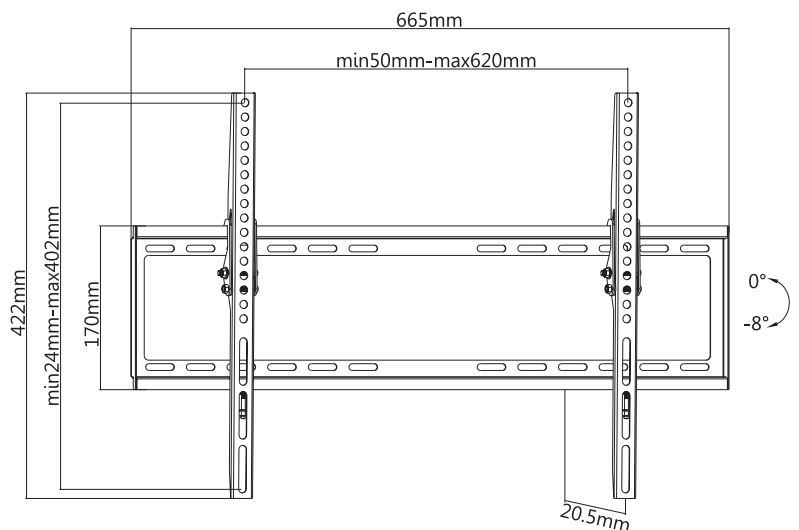
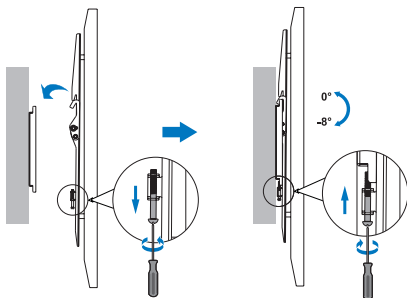
- » Super strong mounting brackets: Solid-reinforced Cold Steel, durable product with maximum capacity of 35kg
- » 20.5mm Profile from wall and Tilt Capacity: 0°~-8°
- » Compatible with VESA 200x200mm, 400x200mm, 300x300mm, 400x400mm, 600x400mm
- » Easy to install
- » Fit for 37-70 inch LED LCD plasma TV, PC Monitor screens



Install the wall plate to the Solid wall or Double Stud wall



Install the wall mount to back of the TV



Apply the TV with wall mount to the wall plate



RoHS  
compliant

\* The specifications and pictures are subject to change without notice.  
\* All trade names referenced are the registered trademark of their respective owners.



BP0039



4 052792 046373

Made in China

# LogiLink®

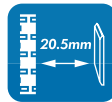


## Tilt TV Wall Mount for 37"- 70" TV

Art. No.: BP0039

### Specification:

Screen Size	37"-70"
Rated Load	35kg/77lbs
VESA	200x200, 400x200, 300x300, 400x400, 600x400
Distance to the wall	20.5mm
Tilt	0° ~ -8°
Product Size	665 x 422 x 20.5mm



### Package Contents:

- » 1 x TV Wall Mount
- » 1 x Screw Package

### Package Informations:

- » Packing Dimension: 670 x 175 x 25mm
- » Packing Weight: kg
- » Carton Dimension: mm
- » Carton Q'ty: pcs
- » Carton Weight: kg

- ⚠ Please find out the weight and mounting hole distance of your TV before selecting a suitable mount.
- ⚠ Please download the user manual online at: <http://www.2direct.de/media/other/M-BP0039.pdf>



RoHS  
compliant

\* The specifications and pictures are subject to change without notice.  
\* All trade names referenced are the registered namework of their respective owners.



BP0039



4 052792 046373

Made in China